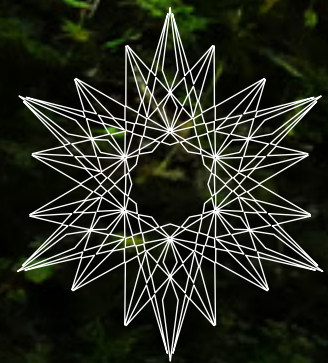


Treatment Menu



ISUN SKINCARE

CHIPETA
LODGE
SPA

Treatment Menu

Our treatment menu embraces a holistic approach to well-being, offering a unique blend of therapeutic services designed to rejuvenate both body and spirit. We proudly feature ISUN products, sophisticated organics handcrafted from live plants and minerals that resonate with your skin on a cellular level. These powerful ingredients open the door to true rejuvenation and well-being, enhancing each spa experience. Whether you seek relaxation, detoxification, or renewal, our treatments harmonize with nature's best to nurture your inner balance and outer beauty.



CIMMARON ceremonies

At Chipeta Lodge Spa, our spa ceremonies are crafted to provide more than just relaxation; they are immersive experiences designed to restore balance, rejuvenate the body, and renew the spirit. Each ceremony harnesses the natural healing power of Colorado's landscape and our holistic approach ensures that the benefits go beyond the physical level, fostering a profound sense of peace and well-being.

Mountain mist awakening

- Cleanse Body Wrap
- Elevate Facial
- Recovery Massage with CBD

3 Hours \$550

Highland harmony

- Journey of the Gems Foot bath
- Eshin Scalp & Hair Treatment
- Soul Foot Treatment

\$175

Summit serenity

- Journey of the Gems Foot Bath
- Quench Body Wrap
- Mini Facial
- Eshin Scalp & Hair Treatment
- Full Body Gemstone Massage

3 Hours \$490

2^{day} journey

Escape to a world of tranquility with our Two-Day Spa Journey, designed to nourish your body, mind and spirit. On day one, begin your journey with rejuvenating moments in our gym, followed by unwinding in the sauna and refreshing laps in the pool. Indulge in a gemstone aromatherapy massage to melt away stress, and savor a gourmet lunch to nourish your body from within.

Day two is designed for deep relaxation and renewal. Start with an invigorating body scrub and a cocooning body wrap to nourish and rejuvenate. Pamper yourself with a revitalizing facial, then drift into bliss with a soothing scalp and full-body massage. Let our serene environment and expert care guide you to a state of perfect harmony and renewal.

Day 1

Sunrise

- Use of facilities
- Sauna
- Transcend Gemstone Massage
- Lunch by the pool or sun conservatory.
- Facial of choice.

\$1300

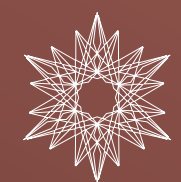
Day 2

Alpine Glow

- Use of facilities
- Sauna
- Summit Serenity
- Lunch by the pool or sun conservatory
- Yoga

\$1300

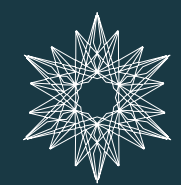
FACE



ISUN SKINCARE

CHIPETA
LODGE
SPA

BODY



ISUN SKINCARE

CHIPETA
LODGE
SPA

B O D Y

transcend

\$245

ENERGIZE • GROUND • BALANCE | 80 minutes

Experience a deeply relaxing massage that balances your energy and brings any imbalances into alignment. Calming and uplifting aromatherapy blends, energy-balancing gemstones and herb-infused massage oils release stagnation and energy blockages, allowing for greater flow in your body. As a result, you'll feel a deep sense of relaxation and overall wellbeing, leaving you refreshed and rejuvenated.

recover

\$325

SOOTHE • RELAX • REVITALIZE | 110 minutes

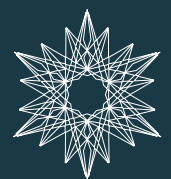
Unwind from your active adventures with a restorative treatment that includes an anti-inflammatory herb and essential oil body wrap and a muscle-melting massage. We begin by applying our herb-infused CBD oil to your body, followed by a warming wrap that soothes sore muscles. To further relax your mind, we include a scalp and hair treatment. Finally, a deep tissue massage integrated with lapis lazuli stones helps release any remaining tension, leaving you feeling renewed and rejuvenated.

quench

\$345

REFINE • HYDRATE • SOOTHE | 110 minutes

Revive dry and dehydrated skin with a nourishing treatment designed to replenish, soothe and restore. The experience commences with a decadent moisturizing scrub, combining the exfoliating properties of fine mineral salt with the hydrating richness of organic shea butter. Your body is then enveloped in a honey-avocado mask, for deep penetration of skin-nourishing ingredients. Finally, a 50-minute massage completes the treatment, leaving your skin radiant and deeply moisturized.



ISUN SKINCARE

CHIPETA
LODGE
SPA

BODY

cleanse

\$345

DETOX • STIMULATE • TONE | 110 minutes

Experience a rejuvenating treatment that promotes circulation, detoxifies tissues, and tones your skin. Our expertly blended body mask contains detoxifying herbs, clay and herbal oils, which deeply penetrate your skin. The wrap produces a thermogenic effect that stimulates circulation, leaving your skin toned and revitalized. Finally, an energizing body massage concludes the experience, leaving you feeling refreshed and invigorated. Note: Contraindicated for pregnancy.

revival

\$145

REVEAL • CLEAR • GLOW | 30 minutes

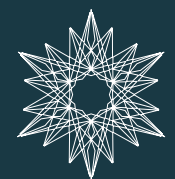
Revitalize your back with a deeply cleansing and detoxifying treatment. An aromatic cleanser prepares your skin for an invigorating and nourishing exfoliation, eliminating impurities and revealing radiant skin. Following the deep cleanse, a luxurious back massage replenishes the skin with organic nutrients, promoting relaxation and easing tension. Finally, a personalized mask tailored to your skin's unique needs, leaves you with a clear and healthy glow.

chipeta lodge massage

50 minutes \$225 / 80 minutes \$240

SESSION

Each session is tailored to your individual needs, whether you seek deep relaxation, muscle tension relief, or an energetic reset. Our skilled therapists blend traditional techniques with holistic elements to create a restorative experience that soothes the body and calms the mind.

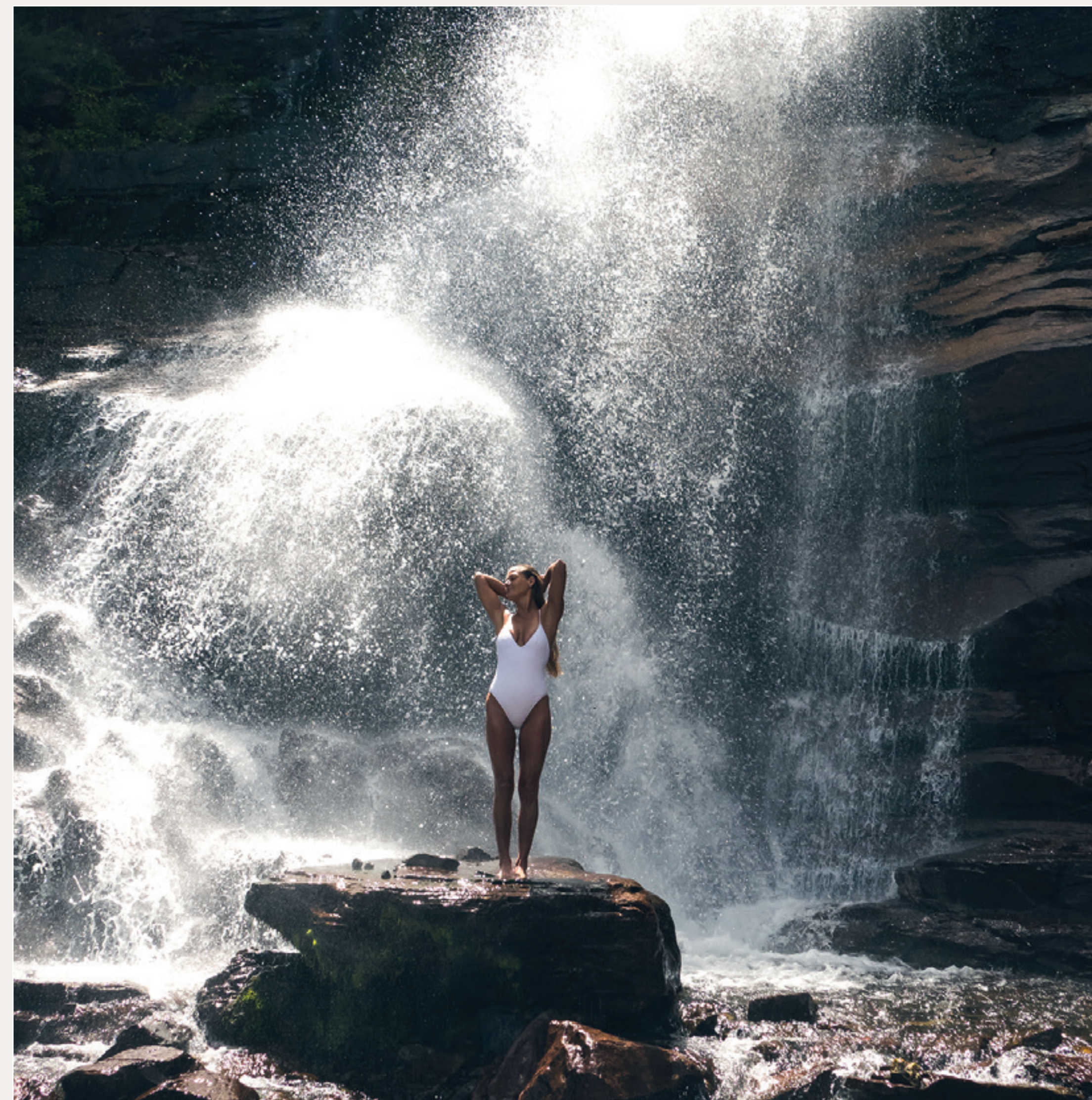


ISUN SKINCARE

CHIPETA
LODGE
SPA

ENHANCEMENTS

Take your spa experience to the next level with our tailored enhancements, designed to complement any facial or body treatment. These luxurious add-ons are carefully curated to elevate your relaxation and deliver targeted benefits, allowing you to personalize your journey.



ENHANCEMENTS

eshin

20 minutes \$45

STIMULATE • CONDITION • STRENGTHEN | 30 minutes

Our conditioning scalp and hair treatment is built on the foundation of Ayurvedic herbs. These herbs possess healing properties and are skillfully blended with essential oils to stimulate the scalp, enhance oxygenation and promote a soothing effect on the mind.

grace

20 minutes \$45

REJUVENATING HAND TREATMENT | 30 minutes

Indulge in a delectable antioxidant hand and arm mask, enriched with enzyme softening gel to promote optimal skin renewal. Following a gentle removal of the mask, your hands and arms are primed for a therapeutic massage with the healing power of Rose Quartz Crystal. Let the soothing touch of the crystal melt away any tension, leaving your skin glowing and revitalized..

soul

20 minutes \$45

PURIFYING FOOT TREATMENT | 45 minutes

Embark on a luxurious foot treatment journey, starting with an aromatic and purifying foot bath infused with herbs and essential oils. Following the soak, your lower legs and feet are treated to an invigorating Rosemary-Sage Scrub, leaving your skin soft and smooth. A calming foot mask is applied and gently wrapped, nourishing your feet and providing deep relaxation. Finally, your feet and lower legs are expertly massaged, culminating in our signature touch - a Clear Quartz Crystal massage on the soles of your feet.

ENHANCEMENTS

harmony

20 minutes \$45

BODY SCRUB | PURIFY & CLEANSE | 30 Minutes

Rosemary and sage essential oils impart their therapeutic properties as they blend with fine ocean-floor silica crystals and an aloe vera gel base to gently buff the skin, leaving a radiant, hydrated glow.

gaze

20 minutes \$45

EYE TREATMENT | 25 minutes

This eye-brightening treatment, designed to refresh and revitalize tired eyes, combines a gentle, soothing massage and a cooling mask rich in antioxidants and hydration. Gaze targets dark circles, puffiness, and fine lines, leaving your eye area looking bright, youthful, and radiant.

luscious

20 minutes \$45

LIP TREATMENT | 30 minutes

Enhance your lips naturally with our smoothing and moisturizing treatment using a nourishing blend of wild honey, mango butter and Himalayan goji berries. Complete your lip care routine with a powerful antioxidant balm, designed to soothe, protect and lock in moisture for beautifully plump and silky smooth lips.